



At a Glance
Physical
Landscape
Natural Heritage
Cultural Heritage
Communities
Political
Economy
Access and Leisure
Dark Skies
Tranquillity

Ian Marshall, for The Sandstone Ridge Trust
7 May 2018

Sandstone Ridge

at a glance

36,000
residents

3
market towns

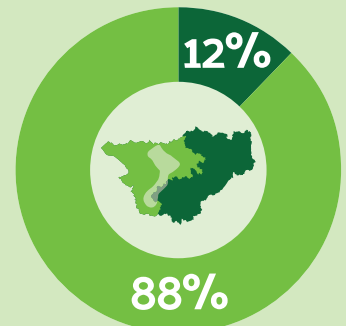
1
medieval royal hunting forest

15 million
trees raised each year by the Forestry Commission

4 million
people live within 20 miles

400+
farmers and landowners look after the area

Location for over
1,000
businesses



88% in Cheshire West
12% in Cheshire East

21,000
cattle

8
views across counties

1
medieval royal hunting forest

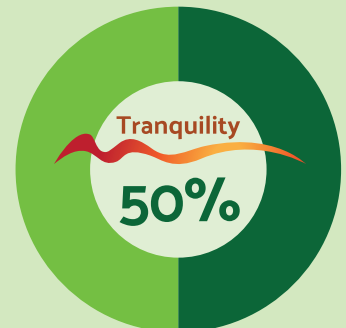
1 million+
visitors annually

130+
meres and mosses

90
national or local wildlife sites,
7%
publicly accessible



15
Regionally Important Geological sites (RIGs)



of the area classified as 'undisturbed'

11,000
sheep

449
listed buildings

41
scheduled monuments

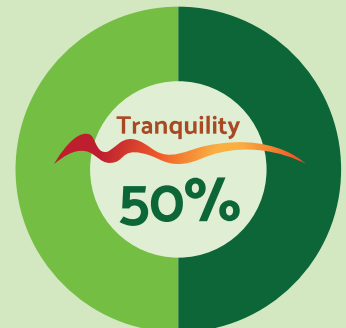
1 million+
visitors annually

130+
meres and mosses

90
national or local wildlife sites,
7%
publicly accessible



15
Regionally Important Geological sites (RIGs)



of the area classified as 'undisturbed'

8,000
pigs

6
Iron Age hillforts

41
scheduled monuments

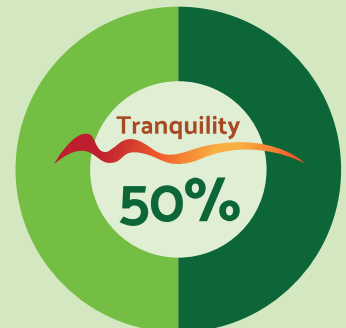
1 million+
visitors annually

130+
meres and mosses

90
national or local wildlife sites,
7%
publicly accessible



15
Regionally Important Geological sites (RIGs)



of the area classified as 'undisturbed'

96,000
poultry

4
castles

41
scheduled monuments

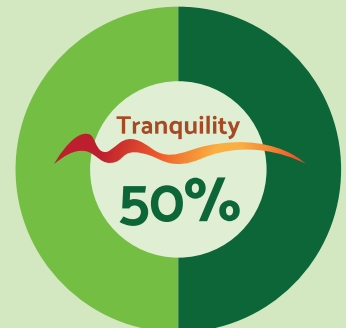
1 million+
visitors annually

130+
meres and mosses

90
national or local wildlife sites,
7%
publicly accessible



15
Regionally Important Geological sites (RIGs)



of the area classified as 'undisturbed'

368km
of public rights of way including the Sandstone Trail

25
conservation areas

32kms/20miles
long, north-south

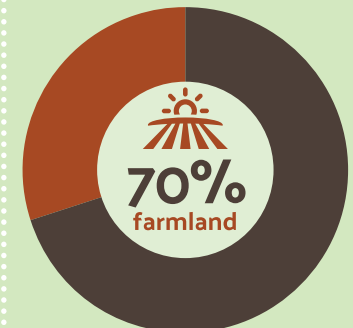
5
railway stations serve the area

43
school catchments and 4 outdoor education centres

1,500
homes could be built from the sand extracted each year

250 million
year old pink-red Triassic sandstone

8,000
olympic-sized swimming pools could be filled with the water abstracted each year for homes and businesses



70%
farmland

Sandstone Ridge - Physical

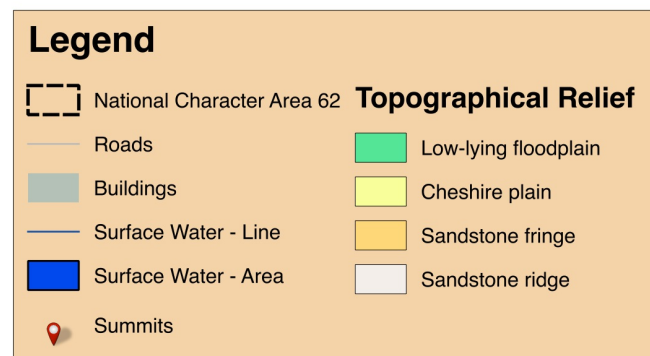
Overview

The Sandstone Ridge comprises a discontinuous range of rolling hills and escarpments stretching north-south through Cheshire.

The lower slopes and surrounding areas have been modified by ice sheets that have a left a considerable thickness of glacial till punctuated by meres and mosses. The landscape is also pitted with hundreds of ponds dug for marl in the 18th and 19th centuries.

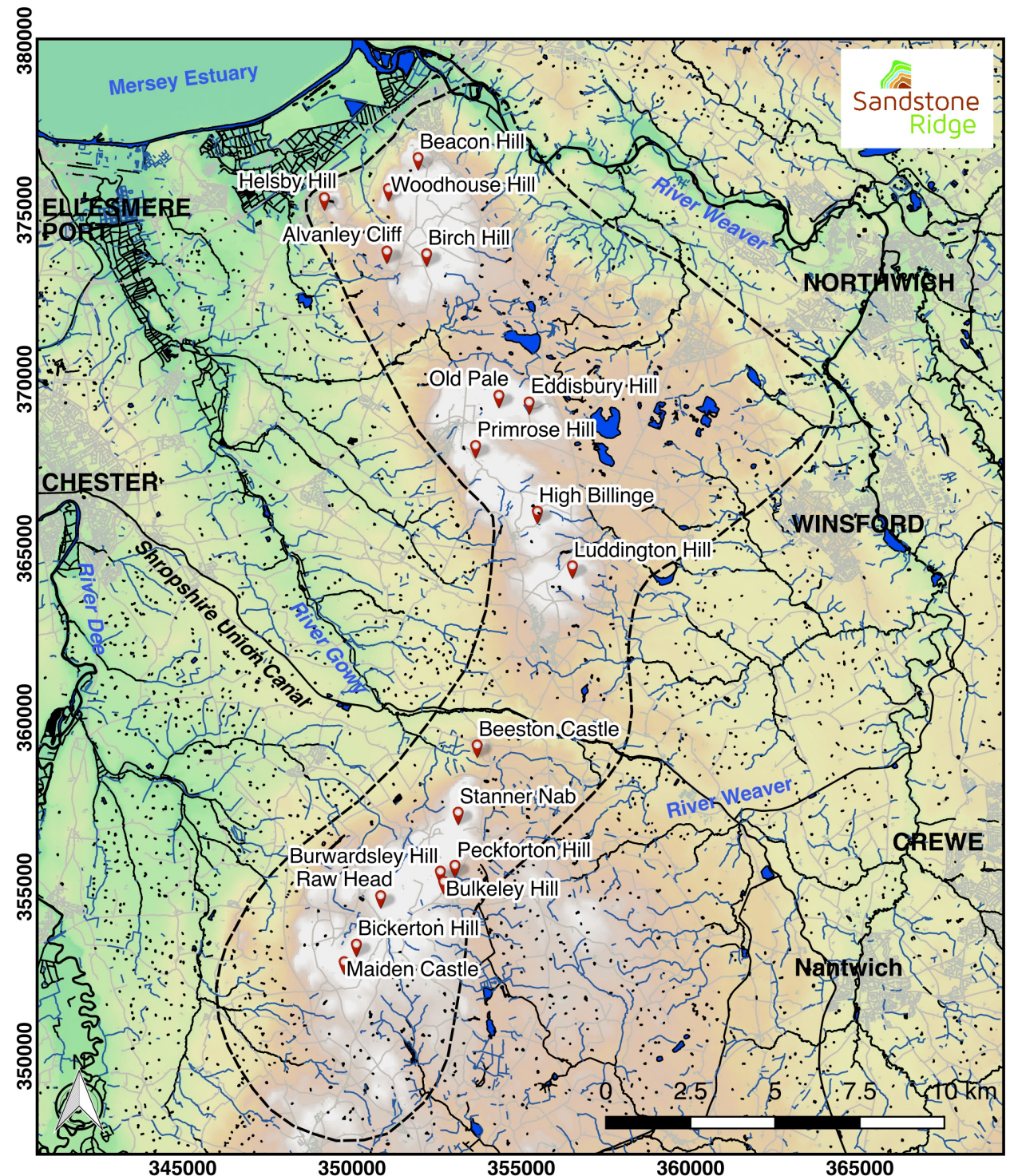
The Ridge rises sharply from the gentle topography of the Cheshire plain, and affords extensive and panoramic long-distance views to Wales, the Peak District, Merseyside and Shropshire hills. It includes 18 summits above 135m, with the highest elevation reached at Raw Head in the Peckforton Hills, some 227m above sea level.

The rivers Weaver and Gowy rise in the Peckforton Hills and, with their tributaries, contribute to the Weaver/Gowy and Dee catchments for public, agricultural and industrial water supply within and outside Cheshire.



Ian Marshall, for The Sandstone Ridge Trust
7 May 2018

OS Open data - Contains OS Data (c) Crown copyright and database right (2016)



Sandstone Ridge - Landscape

Overview

The Cheshire Sandstone Ridge is recognised nationally as a distinctive landscape — one of 159 National Character Areas in England (No. 62).



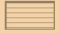

National Character Area 62 comprises eight separate landscape character types.

The special qualities of the Sandstone Ridge are recognised locally by the designation of 5 Areas of Special County Value for Landscape within the area (Local Landscape Designation).

Delamere Forest was proposed as an AONB in the Hobhouse Report to Government in 1946.

Note: A landscape character assessment for Cheshire East is in draft, and currently unavailable.

Legend

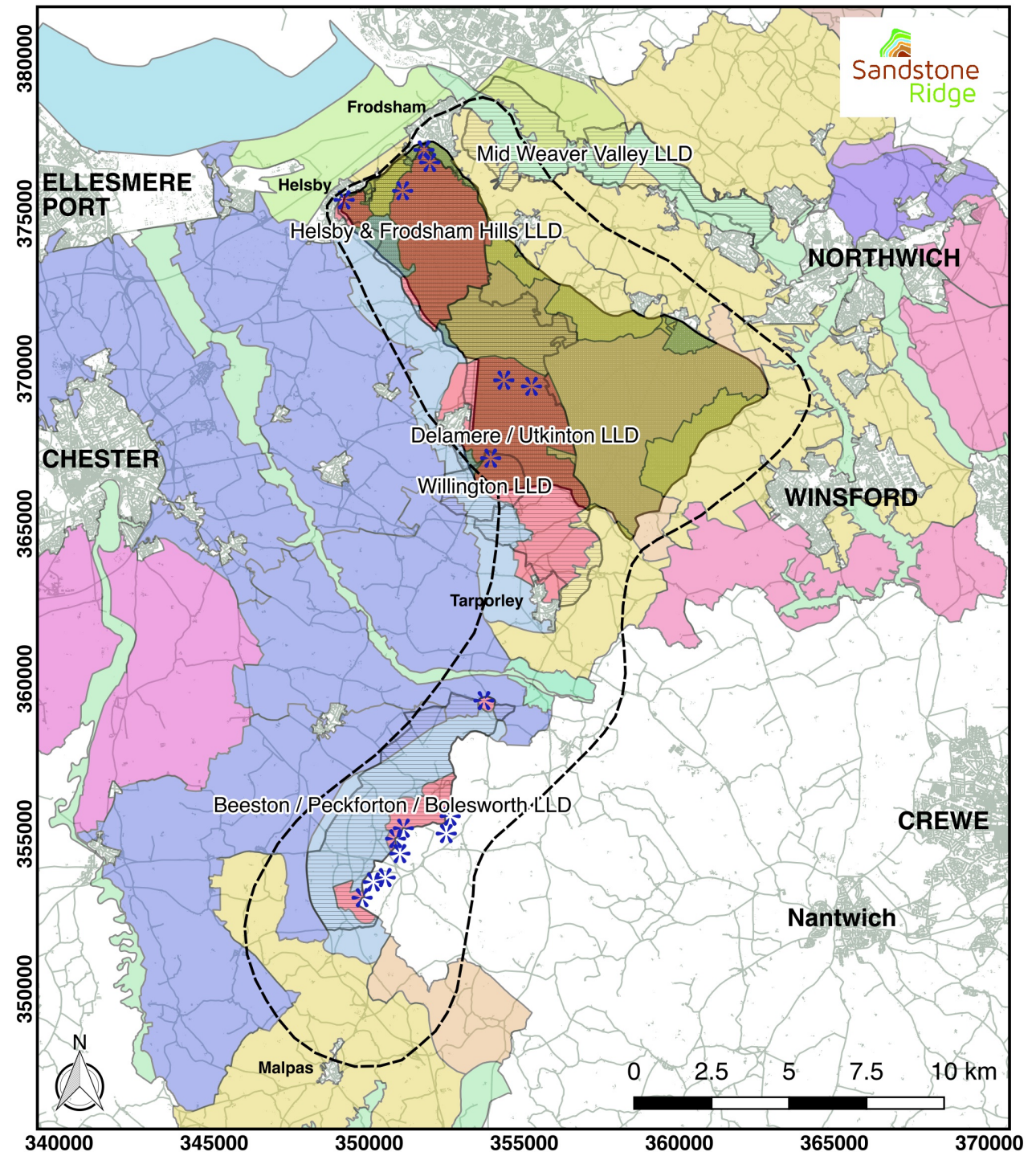
-  National Character Area 62
-  Viewpoints
-  Local Landscape Designation (LLD)
-  Proposed Delamere Forest AONB 1946

Landscape Character Types

-  Sandstone Ridge
-  Sandstone Fringe
-  Woodlands, Heaths, Meres & Mosses
-  Undulating Enclosed Farmland
-  Cheshire Plain West
-  Cheshire Plain East
-  River Valley
-  Rolling Farmland
-  Roads
-  Buildings

Ian Marshall, for The Sandstone Ridge Trust
7 May 2018

OS Open data - Contains OS Data (c) Crown copyright and database right (2016)





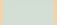
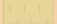



Sandstone Ridge - Natural Heritage

Overview

National Character Area 62 includes:

6 European Wildlife Sites.
90 National or Local Wildlife Sites.
15 Regionally Important Geological sites (RIGs).
13% woodland cover, including 343 hectares of ancient woodland.
Internationally important meres and mosses.
The most extensive remnants of lowland heathland and sessile oak woodland in Cheshire.

Legend

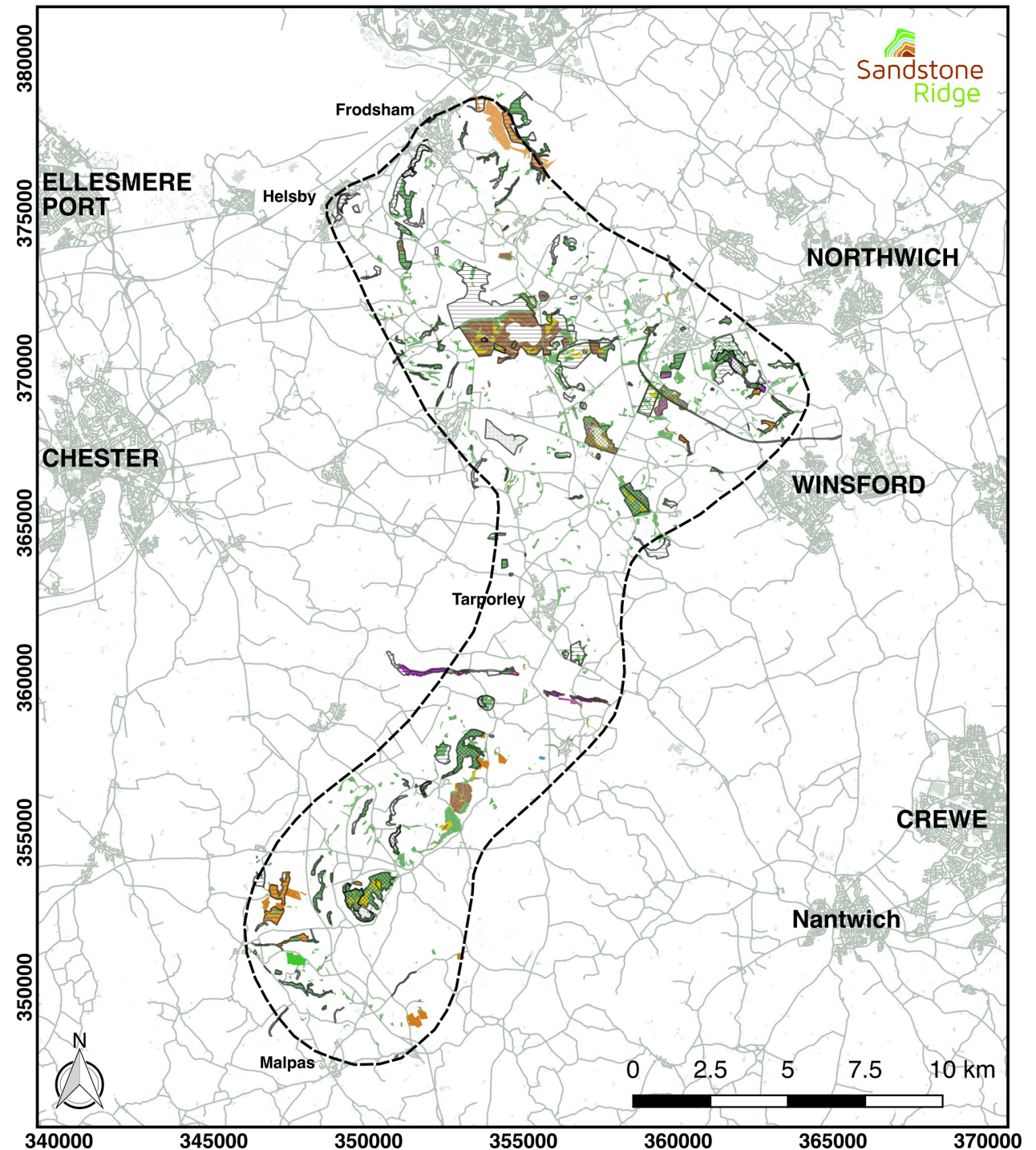
-  National Character Area 62
-  Roads
-  Buildings
-  European wildlife site
-  Site of Special Scientific Interest
-  Local Wildlife Site
-  Regionally Important Geological Site

Priority Habitats

-  Deciduous woodland
-  Coastal and floodplain grazing marsh
-  Good quality semi-improved grassland
-  Lowland dry acid grassland
-  Lowland raised bog
-  Lowland fens
-  Lowland heathland
-  No main habitat but additional habitats present
-  Lowland meadows
-  Purple moor grass and rush pastures
-  Traditional orchard

Ian Marshall, for The Sandstone Ridge Trust
7 May 2018

OS Open data - Contains OS Data (c) Crown copyright and database right (2016)



Sandstone Ridge - Cultural Heritage

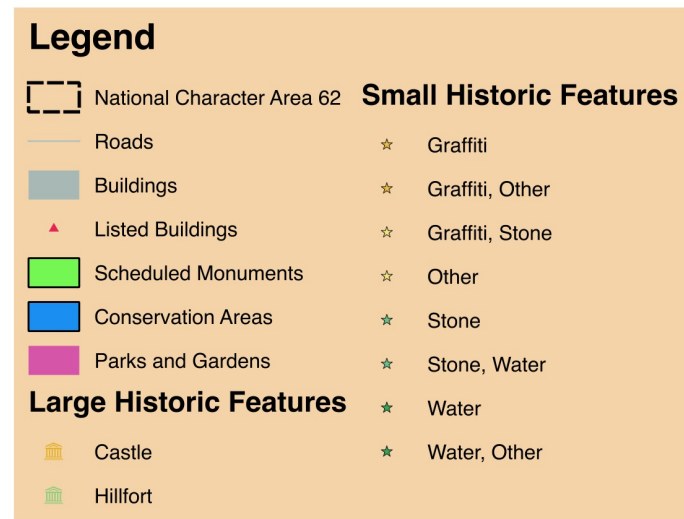
Overview

National Character Area 62 includes:

449 Listed Buildings
25 Conservation Areas
41 Scheduled Monuments
2 Parks and Gardens on Historic England's National Register.

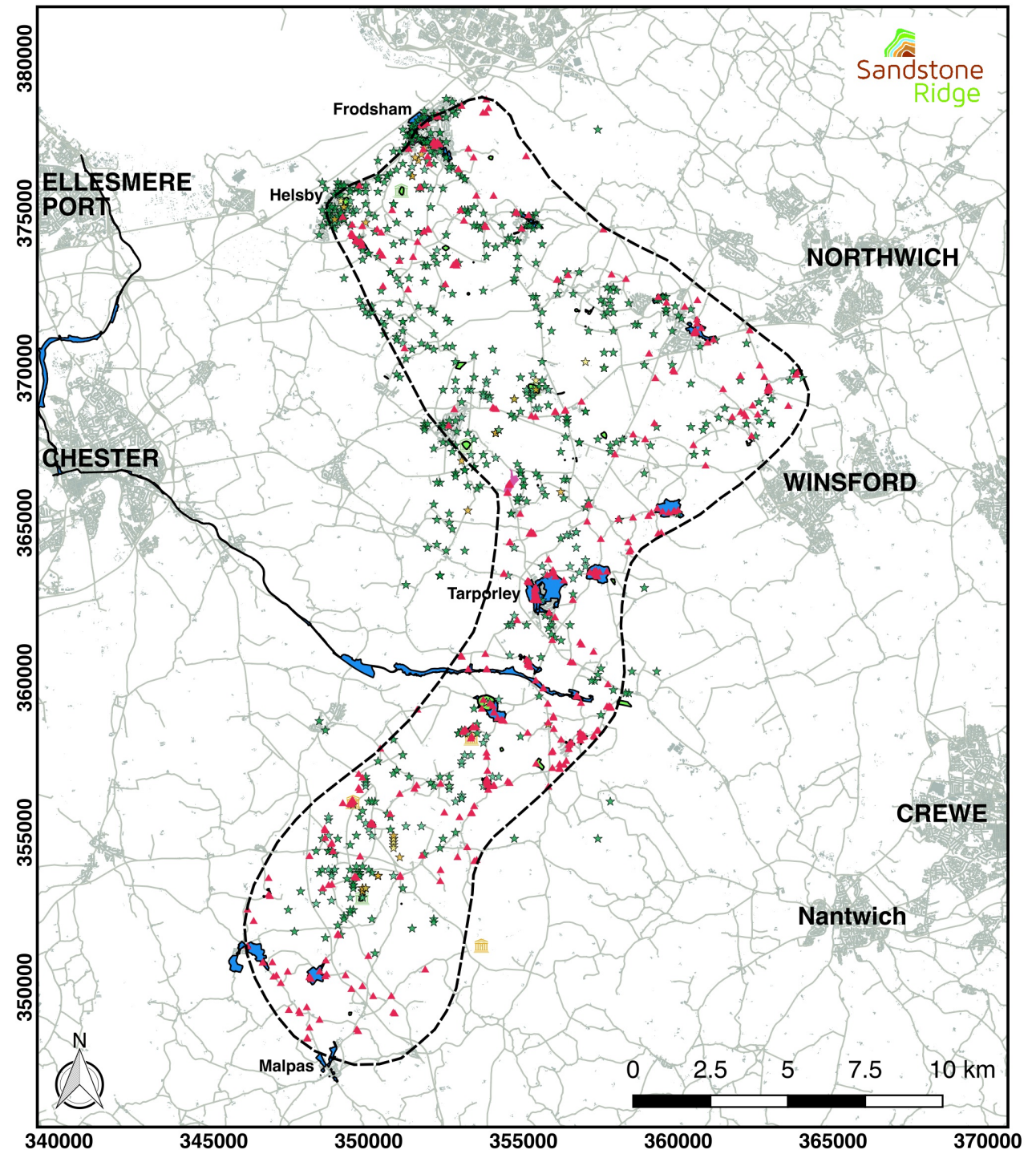
Significant 'Large Historic Features' on the Sandstone Ridge include six Iron Age hillforts and four castles of varying ages.

Between 2014-17, volunteers in The Ridge: Rocks and Springs project recorded over 700 records of sandstone quarries, rock graffiti, rock art, wells, springs and pump houses (shown as 'Small Historic Features').



Ian Marshall, for The Sandstone Ridge Trust
7 May 2018

OS Open data - Contains OS Data (c) Crown copyright and database right (2016)



Sandstone Ridge - Communities

Overview

36,000 people live in National Character Area 62. The population is concentrated around the Key Service Centres of Helsby and Frodsham in the north, Kelsall, Sandiway and Tarporley in the middle of the area, and Tattenhall and Malpas in the south.

28 primary schools and 3 secondary schools are located within the area, as are all four Outdoor Education Centres in Cheshire.

Community facilities include:

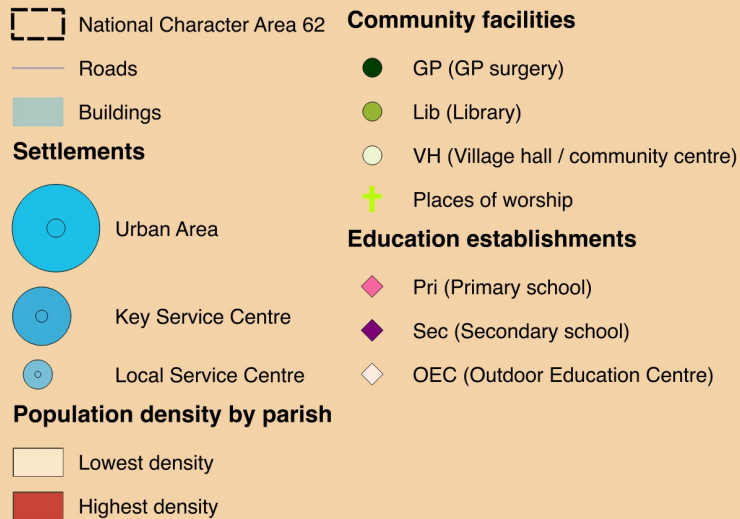
10 GP surgeries

6 libraries

16 village halls and community centres

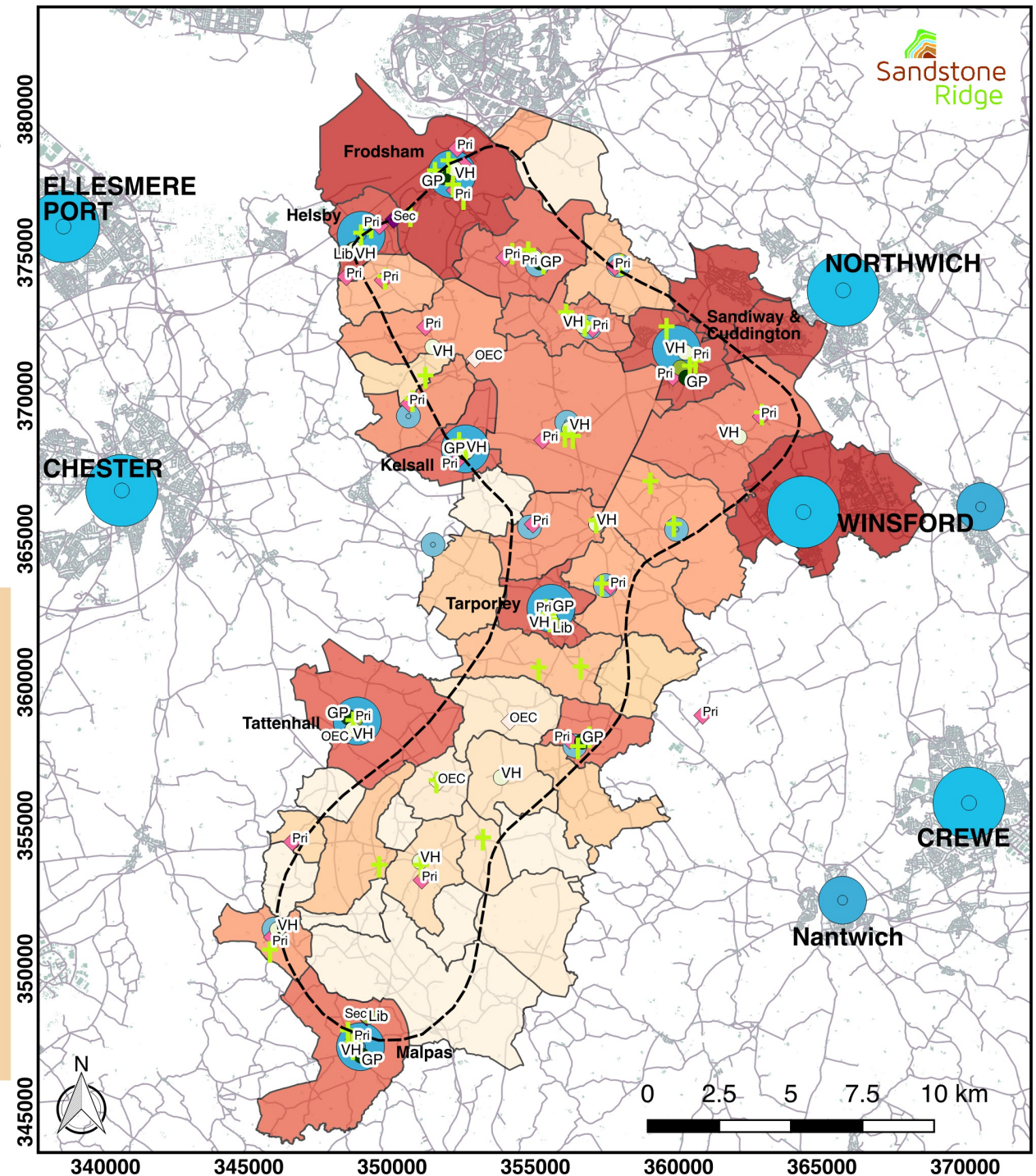
44 places of worship.

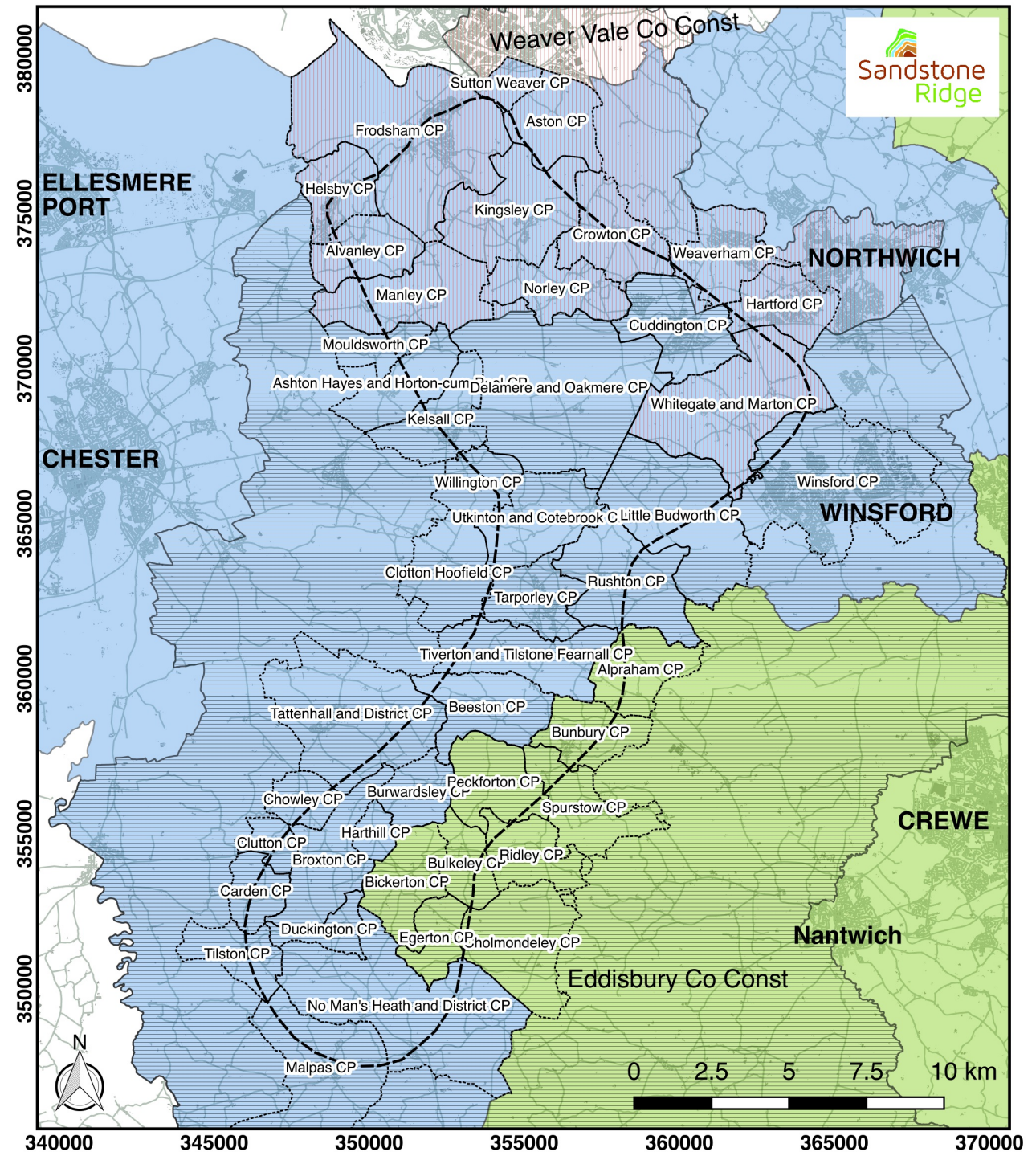
Legend



Ian Marshall, for The Sandstone Ridge Trust
7 May 2018

OS Open data - Contains OS Data (c) Crown copyright and database right (2016)





Sandstone Ridge - Economy

Overview

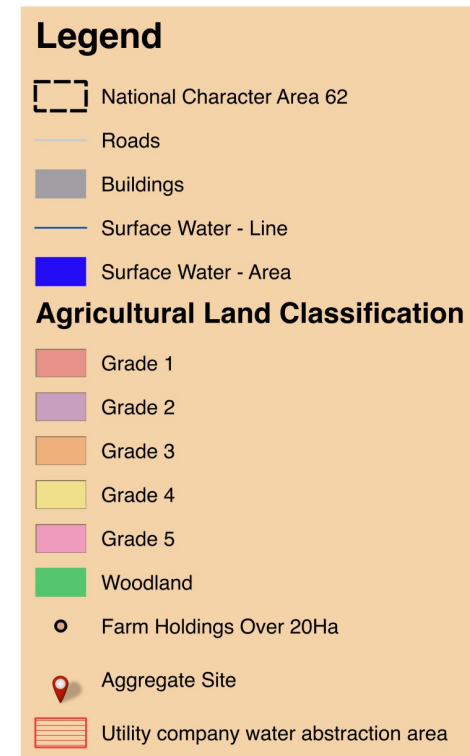
70% of the National Character Area is farmland.
13% of the National Character Area is woodland.

Utility companies abstract 17 million litres of water each year from aquifers beneath the Sandstone Ridge.

There are six sand and gravel quarries with planning permission in the area, two of which are currently active.

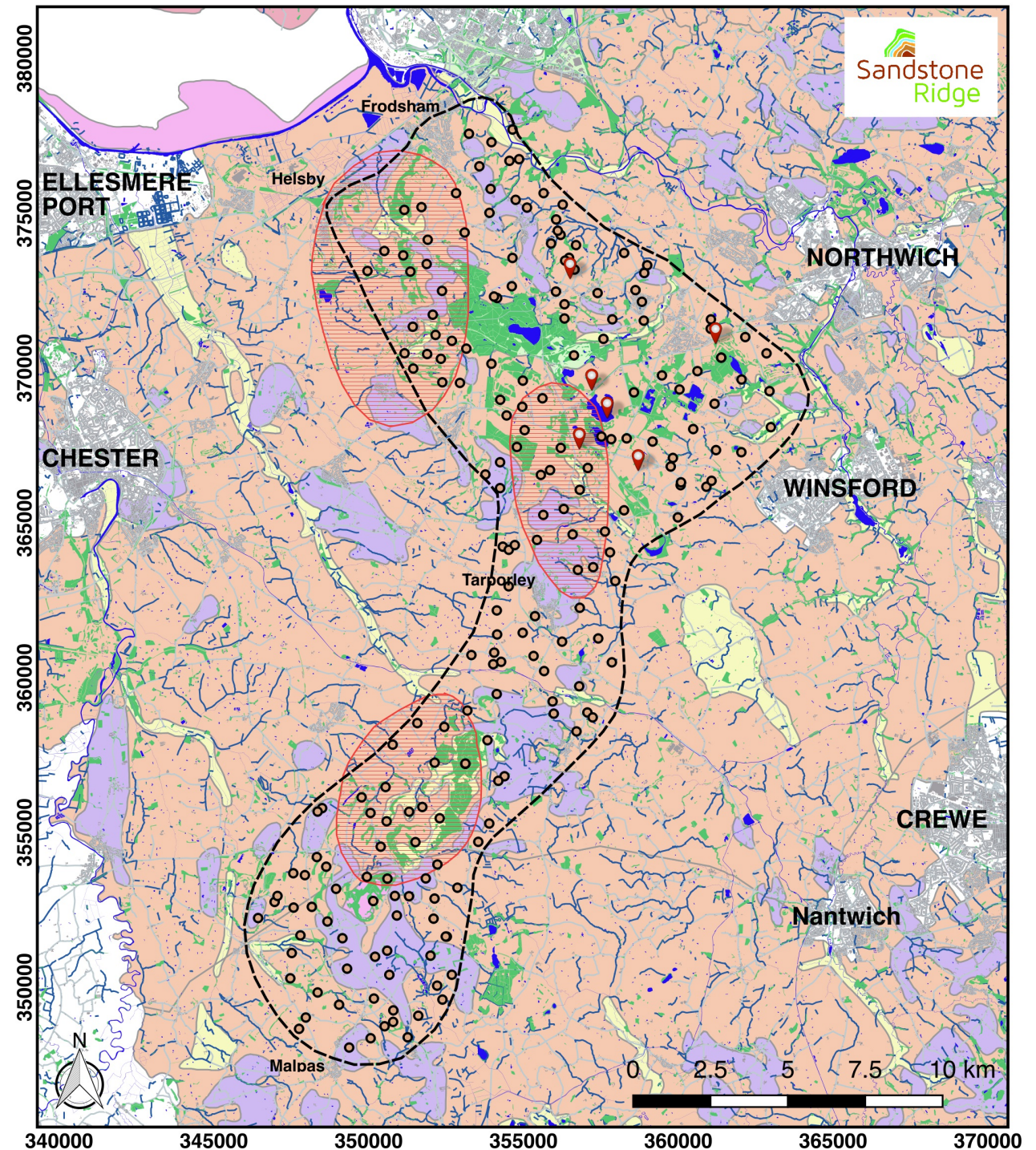
400 farmers and landowners look after the area.

1,000 businesses are located within the area (not shown on the map).



Ian Marshall, for The Sandstone Ridge Trust
7 May 2018

OS Open data - Contains OS Data (c) Crown copyright and database right (2016)



Sandstone Ridge - Access and Leisure

Overview

Over one million people visit the Sandstone Ridge annually for its countryside, cultural and natural heritage and picturesque market towns and villages.

Four million people live within 32km. Liverpool city centre is an hour's drive away, Manchester 30 minutes, North Wales one hour, and Crewe 20 minutes.

Five railway stations serve the area, as well as eleven bus routes (not shown on the map). Nearly 700km of roads criss-cross the area, including the A41, A49, A51, A54, A56, A534 and A556.

7% of the Sandstone Ridge is publically accessible land.

The area includes around 400km of public rights of way, 8 golf courses, and over 20 visitor attractions.

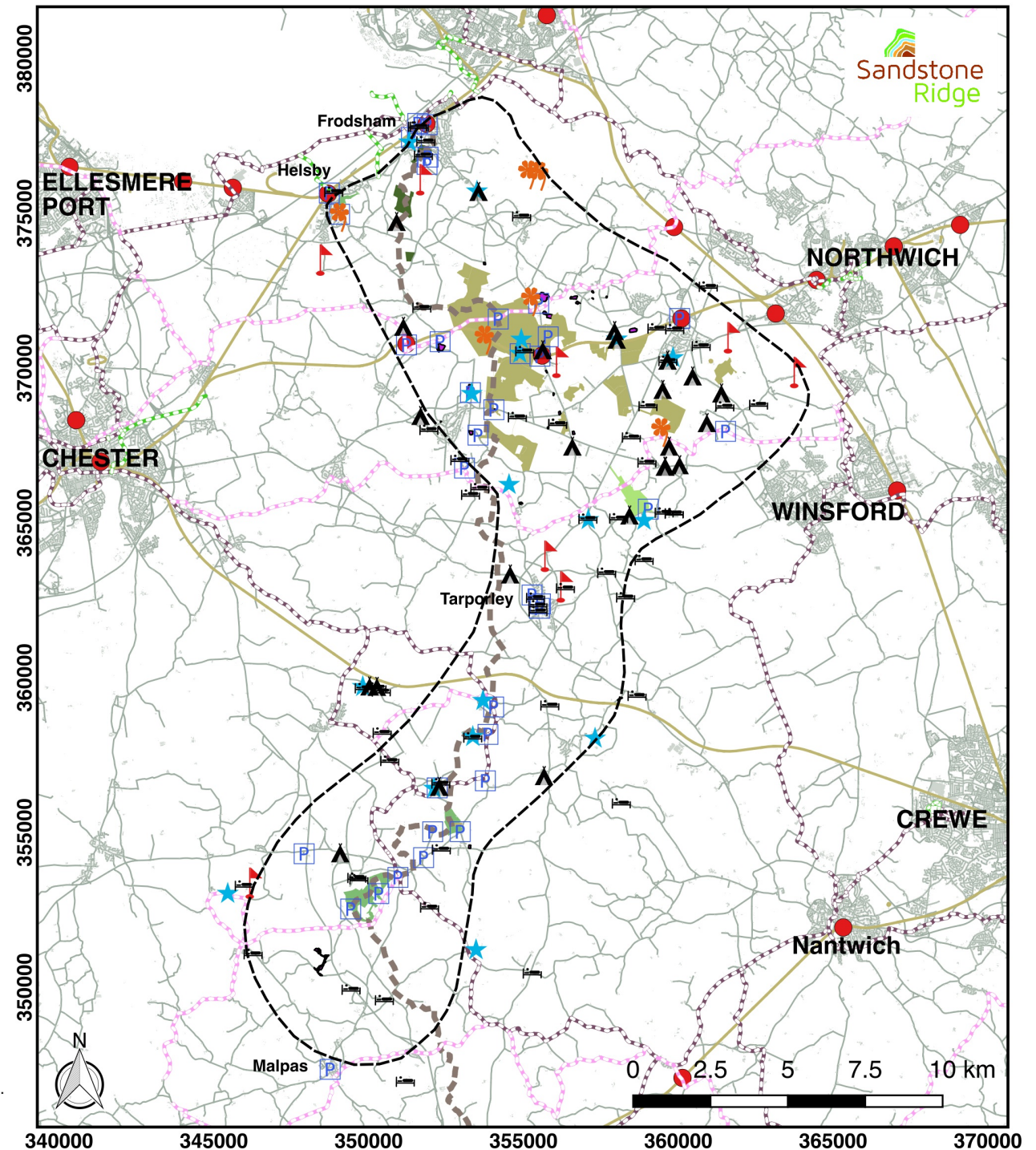
Places to stay include 24 camping, glamping and caravan sites, and c.60 hotels, B&Bs and holiday cottages.

Legend

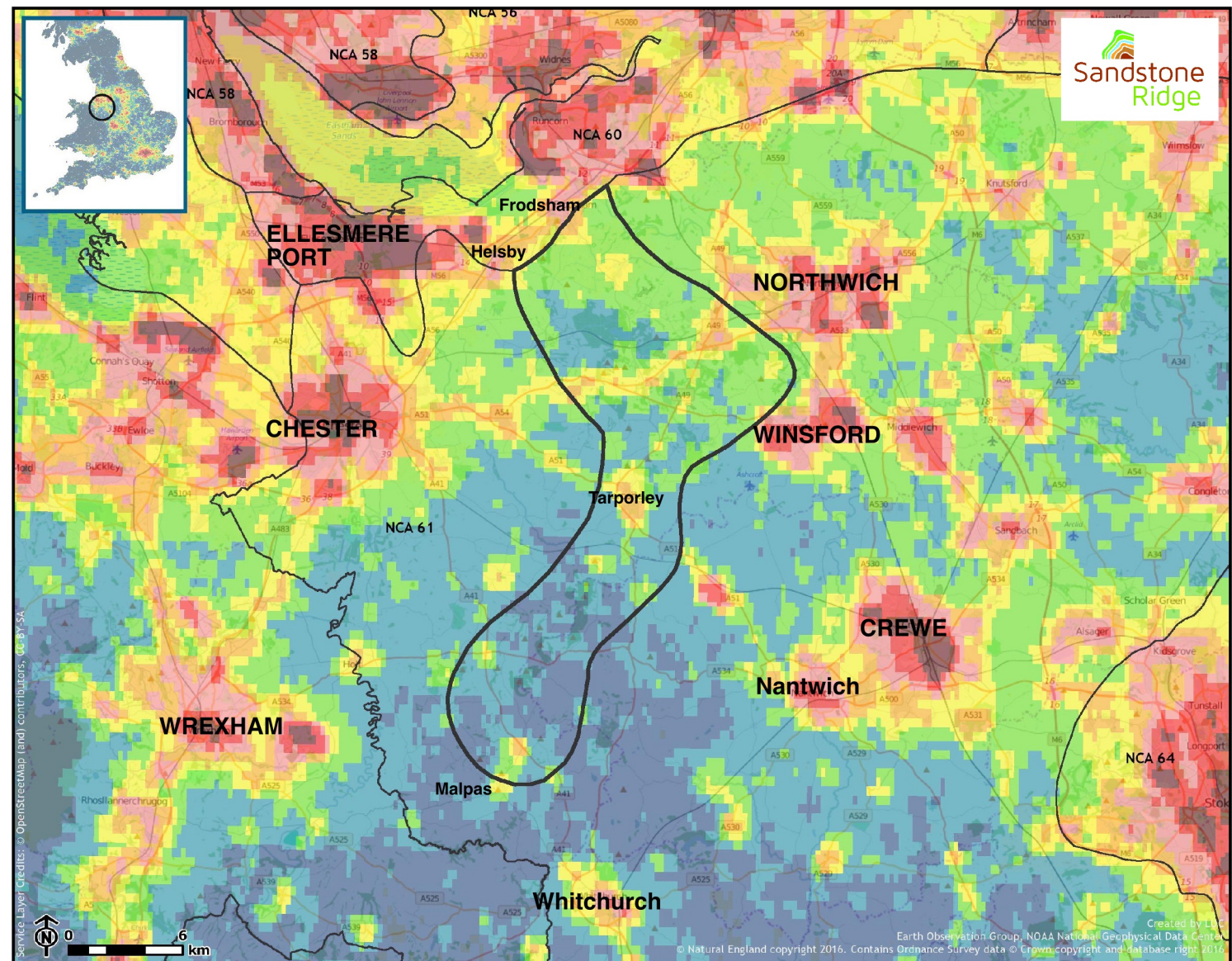
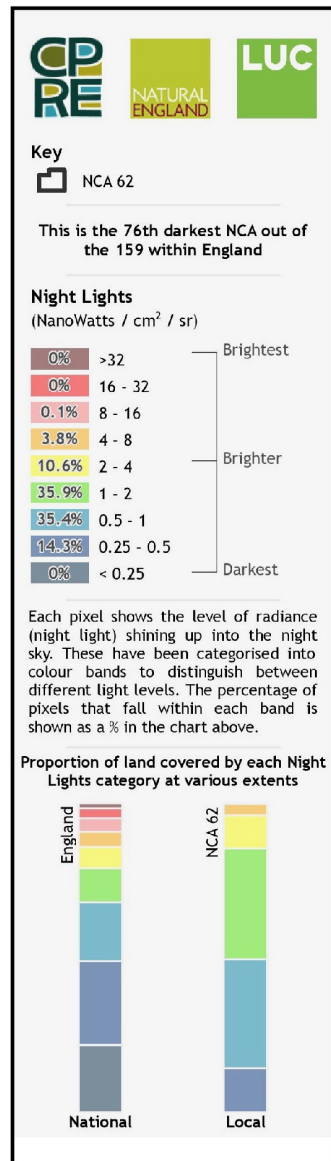
	National Character Area 62		Golf Course
	Roads		Nature Reserve
	Buildings		Car Park
	Sandstone Trail		Railway Station
	National Cycle Network Link		Railway Track
	Regional Cycle Route		National Trust Land
	National Cycle Route		Woodland Trust Land
	Accommodation		National Forest Estate
	Camping and Caravan site		Country Park
	Visitor Attraction		Common Land

Ian Marshall, for The Sandstone Ridge Trust
7 May 2018

OS Open data - Contains OS Data (c) Crown copyright and database right (2016).
National Cycle Route data supplied by Sustrans and contains Ordnance Survey data © Crown copyright and database right (2017).



Sandstone Ridge - Dark Skies



Sandstone Ridge - Tranquillity

Overview

The Council for the Protection of Rural England (CPRE) published a tranquillity map for England in 2006.

It demonstrates areas valuable for lack of disturbance (from urban areas, traffic, power stations, pylons, power lines and mines) and for the presence of natural features - such as trees, water and wildlife - that foster feelings of tranquillity.

Legend

 National Character Area 62



Most tranquil

Least tranquil

Reproduced courtesy of the
Campaign to Protect Rural England.
Revised edition 2007.

Ian Marshall, for The Sandstone Ridge Trust
7 May 2018

OS Open data - Contains OS Data (c) Crown copyright and database right (2016)

